

## Sage SalesLogix E-marketing LAN Fresh Install Procedure

1. Open up the Sage SalesLogix *Administrator* and log in as an Admin.



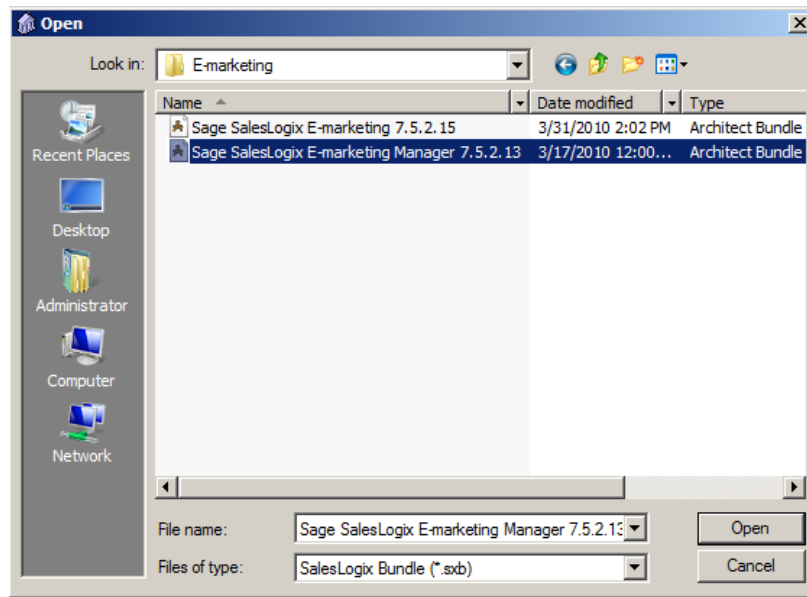
2. Navigate to the *Bundle Manager* by clicking on the *Bundles* button on the left-hand pane.



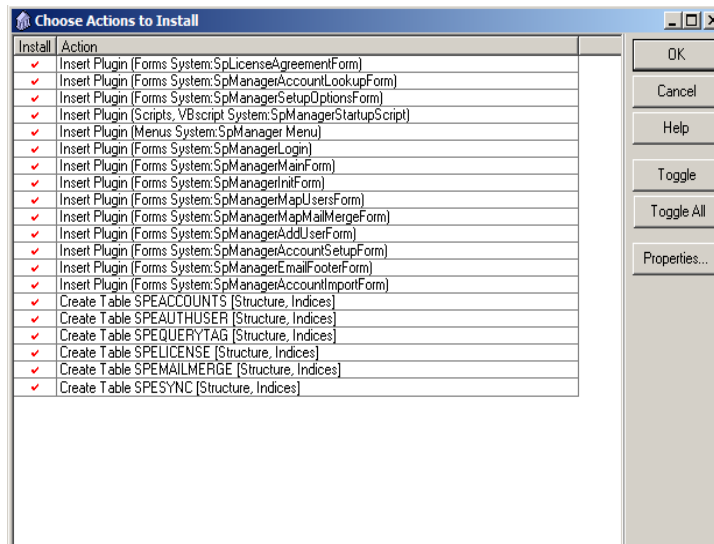
3. Once in the *Bundle Manager* click the *Install* button. If *Swiftpage for Sage SaleLogix* is installed, uninstall it first.



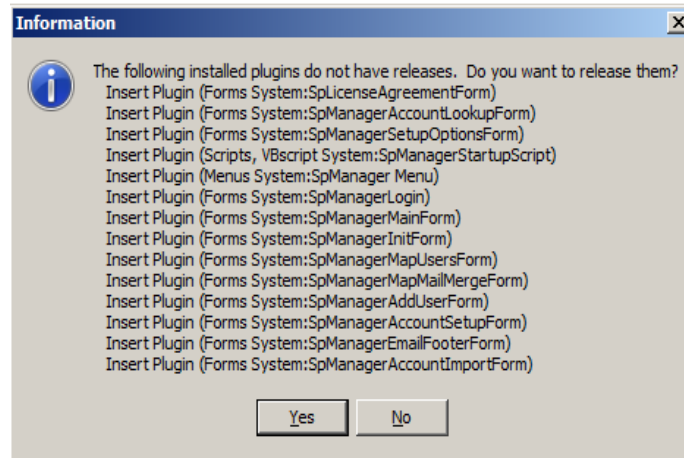
4. Navigate to the *Sage SalesLogix E-marketing Manger LAN bundle*, select it and click *Open*.



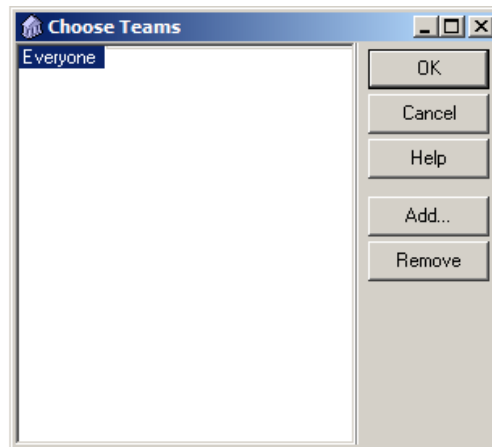
5. On the *Choose Actions to Install* window ensure all options are checked and click the *OK* button.



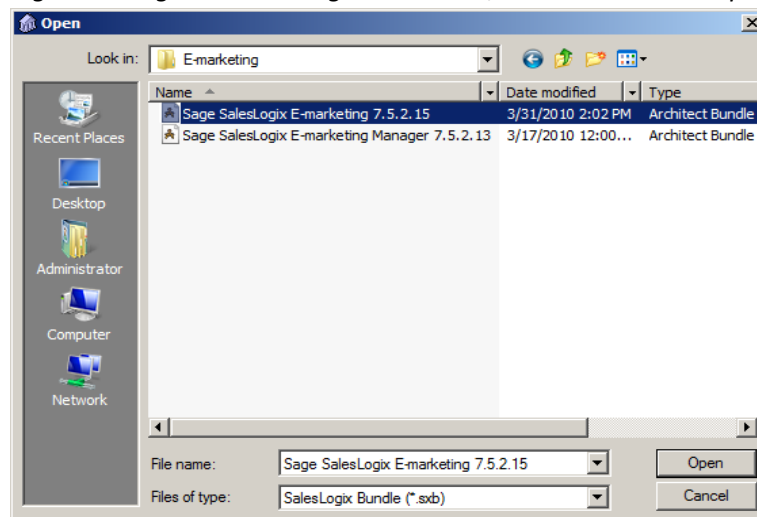
- Click *Yes* on the next window to release the bundle.



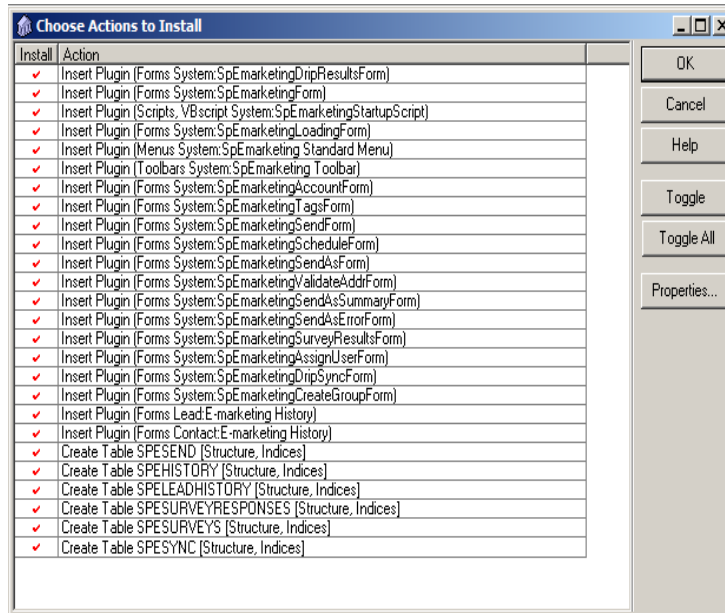
- Select the Sage SalesLogix *Team* you would like the bundle released to, then click *OK*



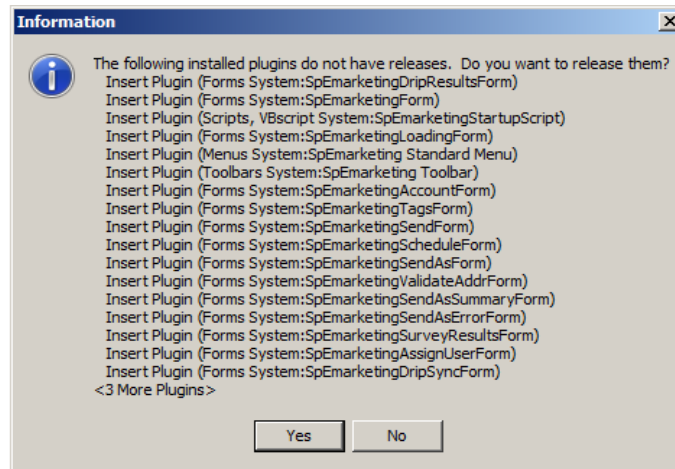
- In the *Bundle Manager* click the *Install* button again to install the second bundle.
- Navigate to the *Sage SalesLogix E-marketing LAN* bundle, select it and click *Open*.



10. On the *Choose Actions to Install* window ensure all options are checked and click the *OK* button.



11. Click *Yes* on the next window to release the bundle.



12. Select the Sage SalesLogix *Team* you would like the bundle released to, then click *OK*

