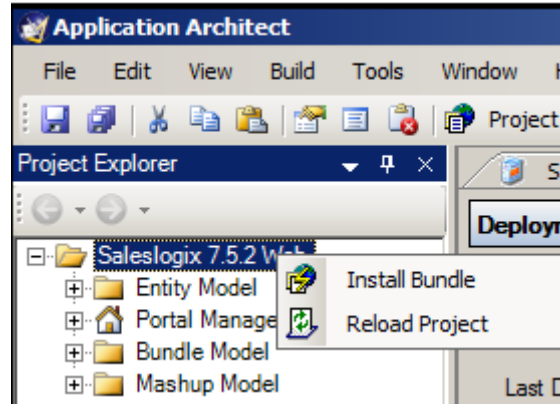
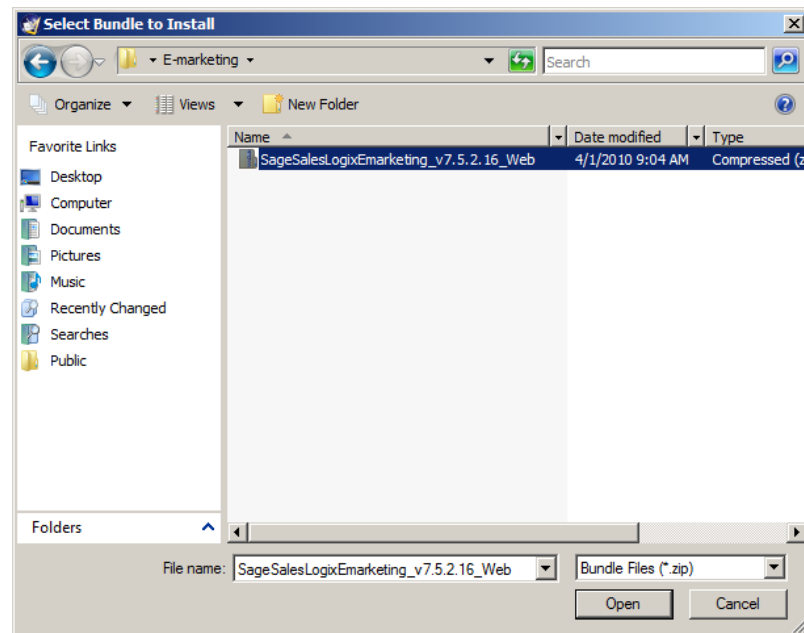


Sage SalesLogix E-marketing Web Fresh Installation Procedure

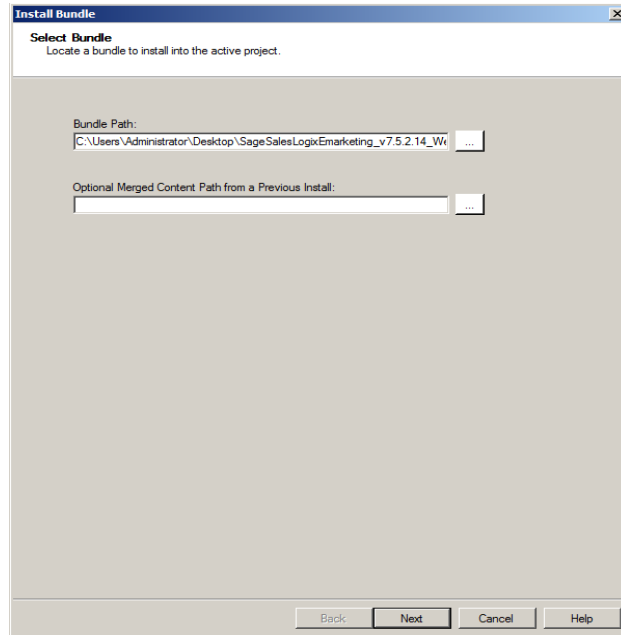
1. Open up the Sage SalesLogix *Application Architect* and log in as an Admin.
2. Navigate to the *Project Explorer*, right-click the *Web Project* and click *Install Bundle*



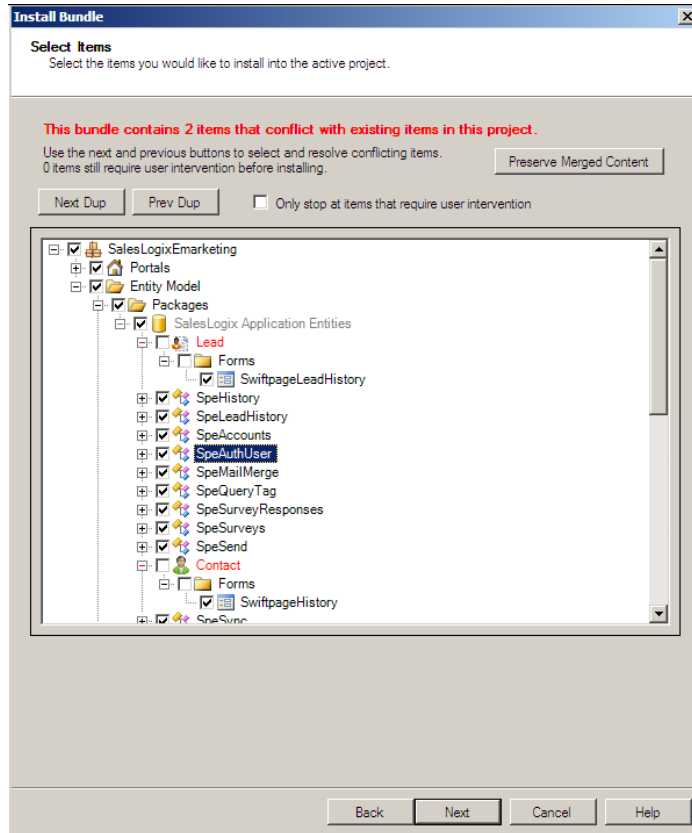
3. Navigate to the *Sage SalesLogix E-marketing Web* bundle, select it and click *Open*.



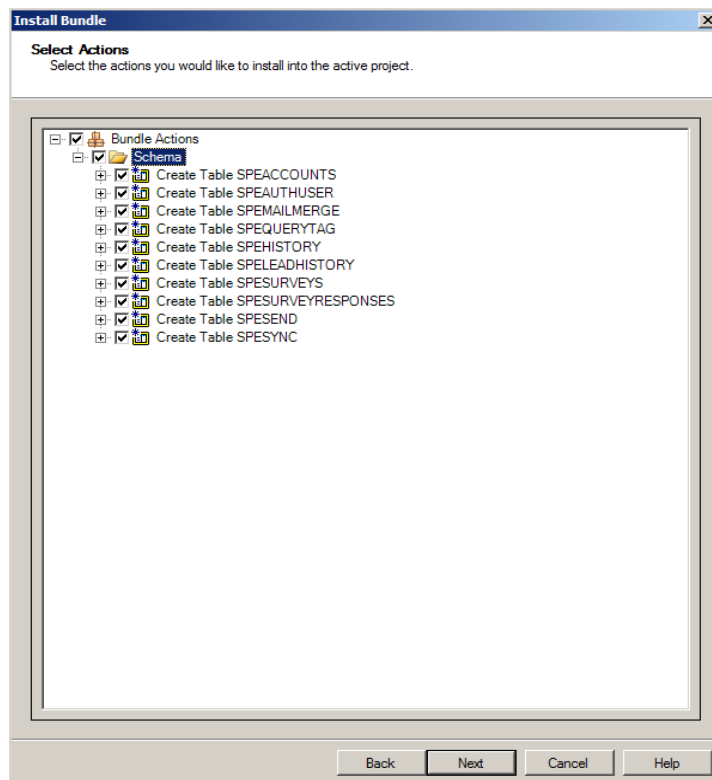
4. Ensure the *Sage SalesLogix E-marketing Web Bundle Path* is correct and click *Next*.



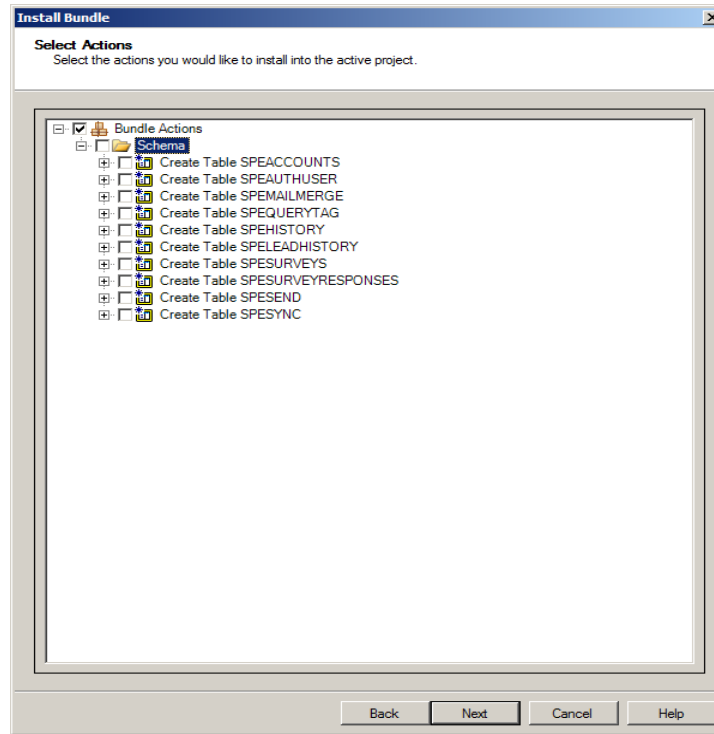
5. Navigate to "Entity Model\Packages\SalesLogix Application Entities\", click the + next to *Contact* and *Lead* entities, and then uncheck the *Lead* and *Contact* checkbox. Now check the boxes for "SwiftpageHistory" form under the "Contact" entity, and the "SwiftpageLeadHistory" form under the "Lead" entity. Once that is done click *Next*.



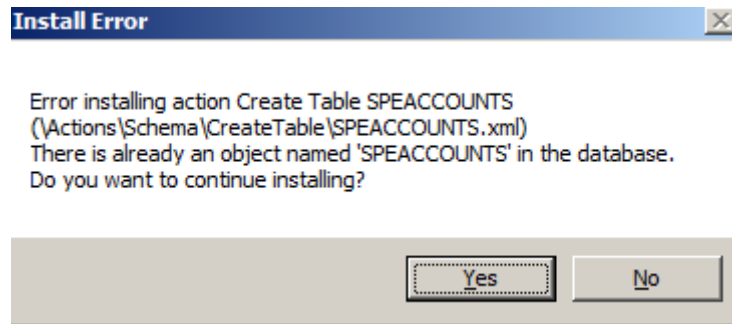
6. If the LAN version of Sage SalesLogix E-marketing is *not* installed then leave all boxes checked, click *Next*.



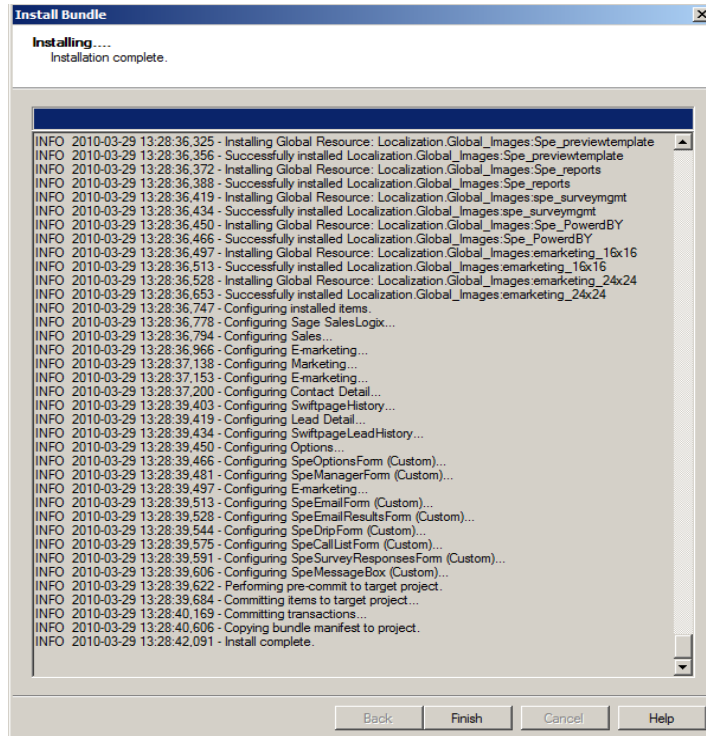
7. If the LAN version of *Sage SalesLogix E-marketing* is installed then uncheck *Schema*, click *Next*.



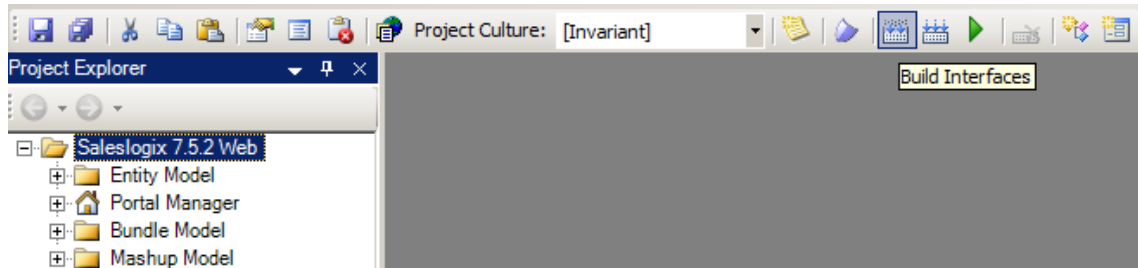
8. If *Schema* was *not* unchecked and the E-marketing tables were previously written, then an *Install Error* message opens for each table conflict. Simply click *Yes* for each of the 10 conflicts.



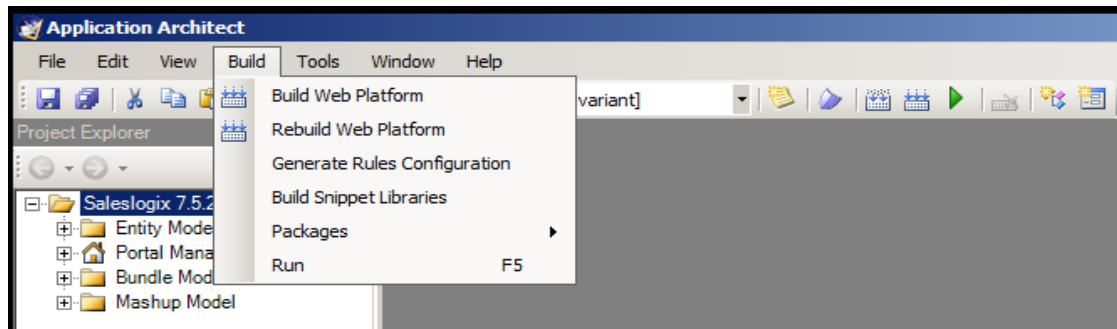
9. When the installation has finished, click *Finish*. Ensure there are no errors in the *Output Window* save for *Create Table* errors.



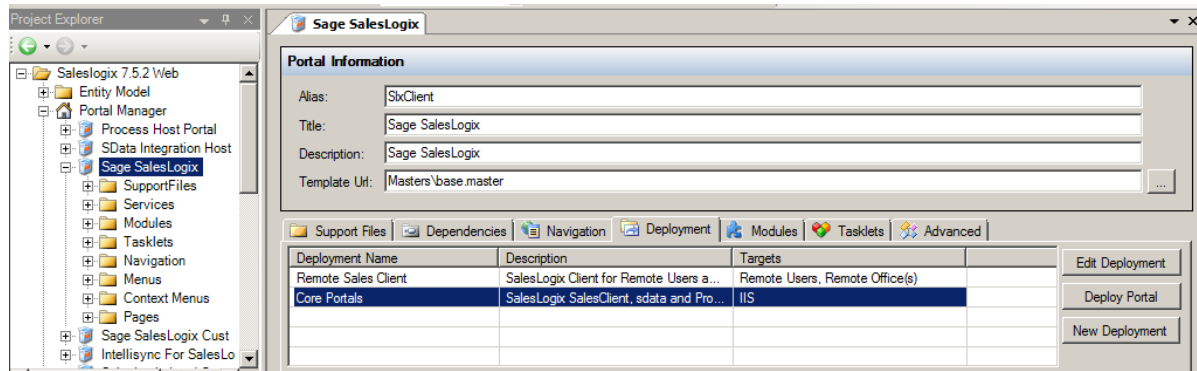
- Ensure the web project is still selected then click the *Build Interfaces* button on the toolbar. Ensure there are no errors in the *Output Window*.



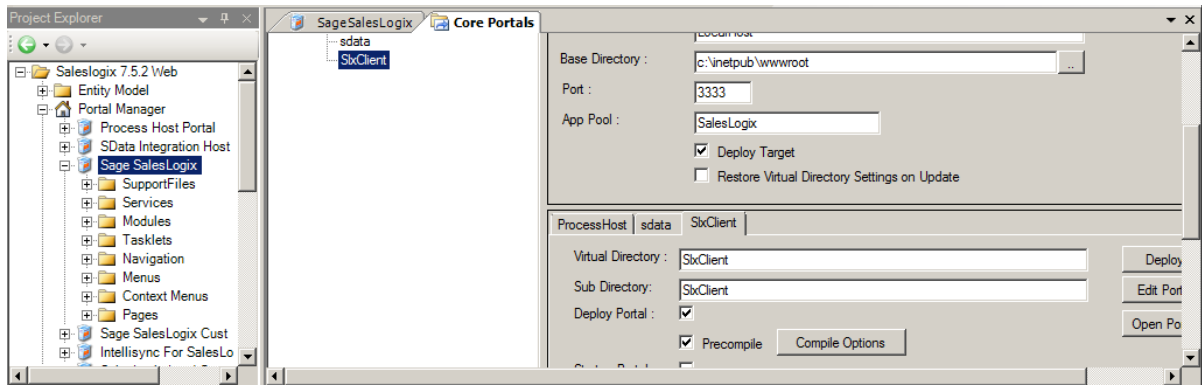
- Ensure the web project is still selected then navigate to the *Build* menu and click *Rebuild Web Platform* from the menu. Ensure there are no errors in the *Output Window*.



- Click the + next to the Web project, and *Portal Manager* then double-click *Sage SalesLogix*. Click the *Deployment* tab and then double-click *Core Portals*.



13. Under the *Core Portals* tab click on *SlxClient* and ensure the *Precompile* box is checked.



14. Click the *Deploy All* button under *Core Portals*. Ensure there are no errors in the *Output Window*.

